

# LASER MARKING AT THE BIRMINGHAM ASSAY OFFICE



THE BIRMINGHAM ASSAY OFFICE  
P.O. BOX 151 NEWHALL STREET  
BIRMINGHAM B3 1SB

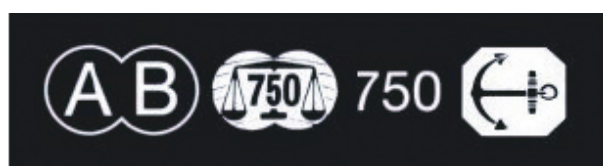
TELEPHONE: +44 (0)871 871 6020  
FACSIMILE: +44 (0)121 236 9032

[www.theassayoffice.co.uk](http://www.theassayoffice.co.uk)  
[info@theassayoffice.co.uk](mailto:info@theassayoffice.co.uk)

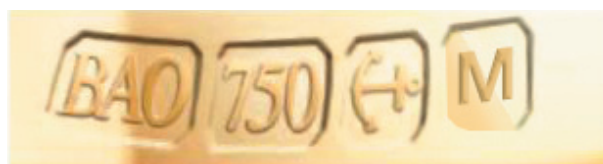
## LASER MARKING

Two styles of laser marking are available – an **outline or incuse mark** and a **relief mark**. The outline laser mark is useful for marking hollow, finished or intricate jewellery products when a punch mark is undesirable.

The **relief laser mark** is suitable for finished or semi-finished products and gives the appearance of a traditional struck mark, without any bruising or distortion at precisely the required size, position and depth.



OUTLINE LASER CONVENTION MARK



RELIEF LASER MARKING

## LOGO LASER MARKING

In addition to applying Hallmarks by laser, The Birmingham Assay Office offers a non statutory laser marking service for corporate logos, unique reference numbering of products, diamond weights, etc. The laser marking facilities are available for products which are not necessarily made of precious metals.

## PRICES

Prices and quotations are available on request for both hallmarking and non-hallmarking applications. There is a one-off charge of £50 + vat to prepare your unique sponsor mark for lasering.

CONTINUES »



THE BIRMINGHAM ASSAY OFFICE  
P.O. BOX 151 NEWHALL STREET  
BIRMINGHAM B3 1SB

TELEPHONE: +44 (0)871 871 6020  
FACSIMILE: +44 (0)121 236 9032

www.theassayoffice.co.uk  
info@theassayoffice.co.uk

UK HALLMARKS	CONVENTION MARKS	ADDITIONAL OPTIONAL MARKS
<p style="text-align: center;"><b>GOLD</b></p> <p>375 </p> <p>585 </p> <p>750 </p> <p>916 </p> <p>990 </p> <p>999 </p>	<p style="text-align: center;"><b>GOLD</b></p> <p> 375 </p> <p> 585 </p> <p> 750 </p> <p> 916 </p> <p> 999 </p>	<p style="text-align: center;"><b>GOLD</b></p> <p> All gold standards</p> <p> Date letter 2011</p>
<p style="text-align: center;"><b>SILVER</b></p> <p>800 </p> <p>925 </p> <p>958 </p> <p>999 </p>	<p style="text-align: center;"><b>SILVER</b></p> <p> 800 </p> <p> 925 </p> <p> 999 </p>	<p style="text-align: center;"><b>SILVER</b></p> <p> 925 or higher</p> <p> 958 or higher</p> <p> Date letter 2011</p>
<p style="text-align: center;"><b>PLATINUM</b></p> <p>850 </p> <p>900 </p> <p>950 </p> <p>999 </p>	<p style="text-align: center;"><b>PLATINUM</b></p> <p> 850 </p> <p> 900 </p> <p> 950 </p> <p> 999 </p>	<p style="text-align: center;"><b>PLATINUM</b></p> <p> 950 or higher</p> <p> Date letter 2011</p>
<p>500 </p> <p>950 </p> <p>999 </p> <p>2009</p> <p>500 </p> <p>950 </p> <p>999 </p> <p>2010</p>	<p style="text-align: center;"><b>PALLADIUM</b></p>	<p> Date letter 2011</p> <p> Optional Mark</p>