

# ANCHORCERT®

INDEPENDENT DIAMOND CERTIFICATION

RETAIL / TRADE

## Tanzanite Grading System

The popularity of Tanzanite is growing steadily. AnchorCert customers are pleased to have this clear and authoritative grading standard to help the consumer understand the variation in quality and price of this rare and precious stone.

The vivid colour and excellent clarity of top quality Tanzanite is particularly evident in larger stones and it is not unusual to see a Tanzanite of several



carats, often in a stunning setting, enhanced by diamonds. Tanzanite set jewellery is therefore likely to be expensive and, understandably, the consumer wants to know what they are buying and be sure it is the real thing.

AnchorCert is the only Laboratory in the UK to have its own grading system for Tanzanite. Under the system, stones are split into one of four colour classifications depending on the intensity of colour and regardless of whether they are violet or blue. The commonly used 'A' system has been applied with AnchorCert grades ranging from 'A' for Pale to 'AAAA' for Vivid. Clarity grades are given according to the coloured stone grading system for type I, Type II and type III gemstones. These grades range from IF (Internally Flawless) to I3 (Included). Tanzanite is a type I gemstone.

The Tanzanite Report is provided on the popular credit card size Mini Report. Stones are tested for authenticity and checked for cobalt coating, which is the latest treatment that AnchorCert gemmologists have discovered. Both loose and mounted Tanzanites can be certificated on this report.

### Caring for Tanzanite

Due to Tanzanite's relative softness, it should be treated with care. It is not a gem that should break easily but due to its relatively low score on the Mohs' Scale it can scratch more easily than other gems like Ruby. To clean it do not use an ultrasonic cleaner or steam cleaner often found in jewellers. The best method is simply to use a toothbrush and warm, soapy water.

SEE TANZANITE CHARTS PAGE 2 »







# ANCHORCERT®

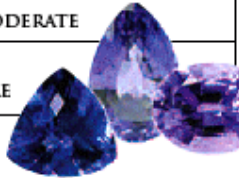
INDEPENDENT DIAMOND CERTIFICATION

RETAIL TRADE

## COLOUR INTENSITY

GRADING APPLIES TO BLUE AND VIOLET GEMS

	AAAA VIVID
	AAA INTENSE
	AA MODERATE
	A PALE



## CLARITY

IF	INTERNALLY FLAWLESS (no inclusions seen, only minor surface blemishes seen under 10x magnification)
VVS	VERY, VERY SLIGHTLY INCLUDED (very minute inclusions difficult to see under 10x magnification)
VS	VERY SLIGHTLY INCLUDED (very minor inclusions somewhat easy to see under 10x magnification)
S1	SLIGHTLY INCLUDED (noticeable inclusions, easily seen under 10X magnification and are visible to the naked eye)
I1	INCLUDED (inclusions are prominent with the naked eye)
I2	INCLUDED (inclusions severely affecting either beauty or durability)
I3	INCLUDED (inclusions severely affecting both beauty and durability)



## SHAPE

 OVAL	 ROUND	 CUSHION	 HEART	 EMERALD	 PRINCESS	 TRIANGULAR	 PEAR	 MARQUISE
---	--	--	--	--	---	---	---	---