



## Your Guide to Selecting a Diamond

Whatever the reason for wanting a diamond, it will be personal and charged with emotion. When choosing a diamond follow your heart. Don't be afraid of love at first sight but do take your time and take advice. Spend as much as you can afford and indulge yourself. A diamond will be part of your life forever. Every diamond is unique and has a beauty all of its own. There is a huge choice available – something to suite every budget. The factors that influence the value are: The Quality of the diamond, often described as the four C's are the clarity, colour, cut and its size (carat weight).

### Colour

Diamonds vary enormously in colour with most of them carrying subtle tones of yellow, and brown. Very few are truly colourless, and these are the rarest and most highly valued.

An unskilled eye may struggle to differentiate between two adjacent grades of colour, but qualified AnchorCert gemmologists, assisted by a diamond light and GIA master "comparison stones" (diamonds graded and recorded at the Gemological Institute of America) can accurately classify diamonds according to internationally recognised colour grading scales. The colour scale starts at D (colourless) and ends at Z (light). Following on from Z, diamonds are graded as 'Fancy colours'.

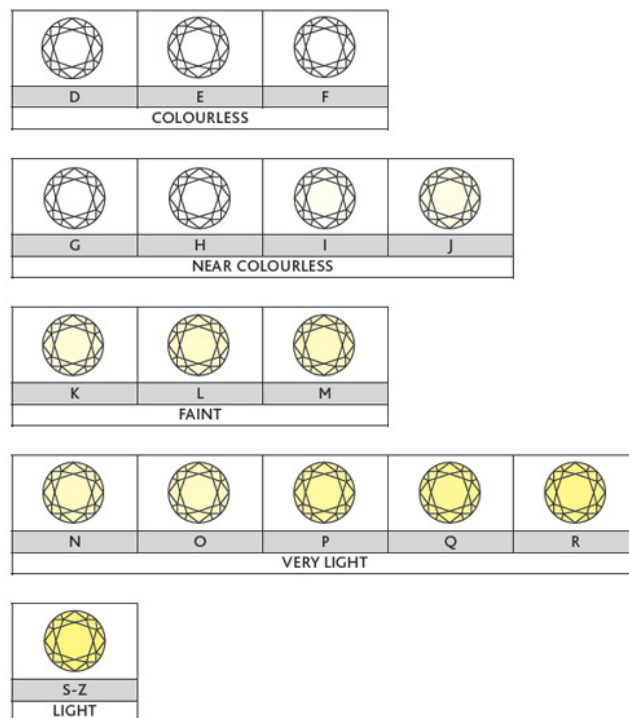
'Fancy' coloured diamonds are rare, attractive and desirable, and command high prices. They exist in various hues of yellow, orange, pink, red, green and blue.

### Diamond Types

Diamonds may contain minute quantities of trace elements which replace some carbon atoms. These trace elements can produce body colour in diamonds. The most common trace element is nitrogen. Based on the significant presence or absence of nitrogen, diamonds are classified into two types.

Type I – diamonds containing nitrogen as a major impurity (up to 0.2%)

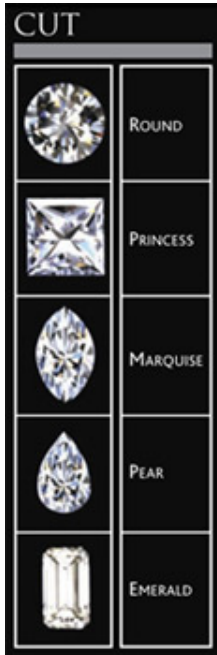
Type II – diamonds that do not contain nitrogen as a significant impurity



# ANCHORCERT®

INDEPENDENT DIAMOND CERTIFICATION

RETAIL / TRADE



## Cut

Round Brilliant is the most popular diamond cut. Traditionally a round brilliant has 58 facets. The facets are aligned at precise angles in relation to each other to maximize the light reflected through the diamond. The shape of the finished diamond will vary according to the natural characteristics of the rough stone and the skill of the cutter. It is one of the most important aspects of a diamond. The quality of cut will significantly affect the look and therefore the value of your diamond.

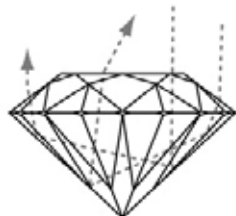
Fashioning a rough diamond takes hours of expertise to reveal a diamond's beauty by cutting and polishing it to perfection. The cutter will fashion and polish the stone so that light is reflected from one facet to another and then dispersed through the top of the stone. It is the way a diamond reflects and refracts light that makes it a thing of beauty. When the maximum amount of light is reflected, a diamond sparkles with fire, brilliance and scintillation.

Diamonds are also cut in other shapes, depending on the original form of the rough diamond. These include emerald, heart, marquise, oval, pear and princess cut. When AnchorCert are certifying a diamond for a Full Report gemmologists will assess the cut of the diamond. This entails looking at the polish and symmetry.

The polish is the relative smoothness of a surface. The polish of a diamond reflects its extreme hardness. This/It enables the facets and faces to be polished extremely precisely giving crisp, clean edges.

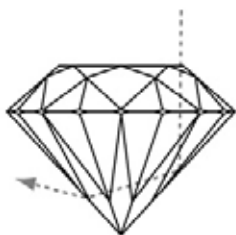
The symmetry of a diamond refers to the positioning and alignment of the facets on a diamond in relation to each other.

A diamond's brilliance is controlled by the quality of its cut.



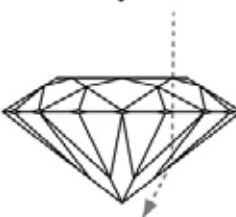
### Ideal Cut

An ideal cut diamond allows the light to reflect through the table and crown giving the diamond fire, brilliance and plenty of sparkle.



### Deep Cut

A deep cut diamond means that the light escapes from the bottom causing the diamond to appear dull and lifeless.



### Shallow Cut

A shallow cut diamond results in light escaping from the sides causing the diamond to lose brilliance.

# ANCHORCERT®

INDEPENDENT DIAMOND CERTIFICATION

RETAIL / TRADE

CLARITY	
GIA® CLARITY SCALE	
FLAWLESS	FL
INTERNALLY FLAWLESS	IF
VERY, VERY, SLIGHTLY INCLUDED	VVS <sub>1</sub>
	VVS <sub>2</sub>
VERY, SLIGHTLY INCLUDED	VS <sub>1</sub>
	VS <sub>2</sub>
SLIGHTLY INCLUDED	S <sub>1</sub>
	S <sub>2</sub>
INCLUDED	I <sub>1</sub>
	I <sub>2</sub>
	I <sub>3</sub>

## Clarity

It is rare to find a flawless diamond. Most diamonds contain tiny imperfections, called inclusions, which are created by nature and make every diamond unique. Inclusions can range from minute dark or light solid fragments, crystals, cleavages, fractures and feathers. Many inclusions are invisible to the naked eye and can only be assessed by a gemmologist using magnification.

The more inclusions a stone contains and the easier they are to detect will determine the clarity grade. Diamonds which have inclusions visible to the naked eye are rated lowest on the clarity scale (I1, I2, and I3).

As with colour, clarity affects value and is graded on an internationally recognised scale from the extremely rare flawless (FL) through to eye visible inclusions (I3).

## Carat

Diamond weight is stated in carats, a measurement derived from the more romantic original scale of comparison using the seeds of the carob tree which were very uniform and consistent in weight. Precision balances are now used and a carat has been standardized as equivalent to one fifth of a gram. One carat is divided into 100 points, so for example, a diamond weighing half a carat can also be described as weighing 50 points or 0.50 carats.

## Caring For Your Diamond

A Diamond is the hardest substance found in nature. It is resistant to damage by heat or scratching and can be cut or polished only by another diamond. However, a blow to the diamond can cause a diamond to chip. The Diamond should be set in a relatively protective setting and with due care it can keep your diamond intact for a lifetime. Exposure during ordinary wear to perspiration and household chemicals such as chlorine and hairspray can cause build up that dulls the surface of a diamond. Periodic cleaning is suggested to keep the diamond brilliant and refractive.

## Cleaning A Diamond

A solution of one part ammonia and six parts water can be used to clean diamond jewellery at home. If cleaning by hand, gentle scrubbing with a soft brush will loosen most dirt and greatly increase the brilliance of the diamond. Be careful not to scratch the metal of the setting. Once a year it may be a good idea to have the diamond cleaned and have the security of the setting checked.

## Storing Diamond Jewellery

Diamond Jewellery can be stored individually in soft cloth pouches when not being worn to prevent the diamond or diamonds from scratching or dulling other jewellery.

CARAT	
	1.25 CTS
	1 CT
	0.75 CT
	0.50 CT
	0.25 CT
	0.10 CT
	0.05 CT